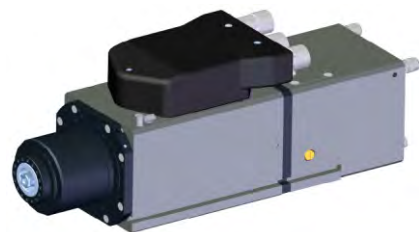




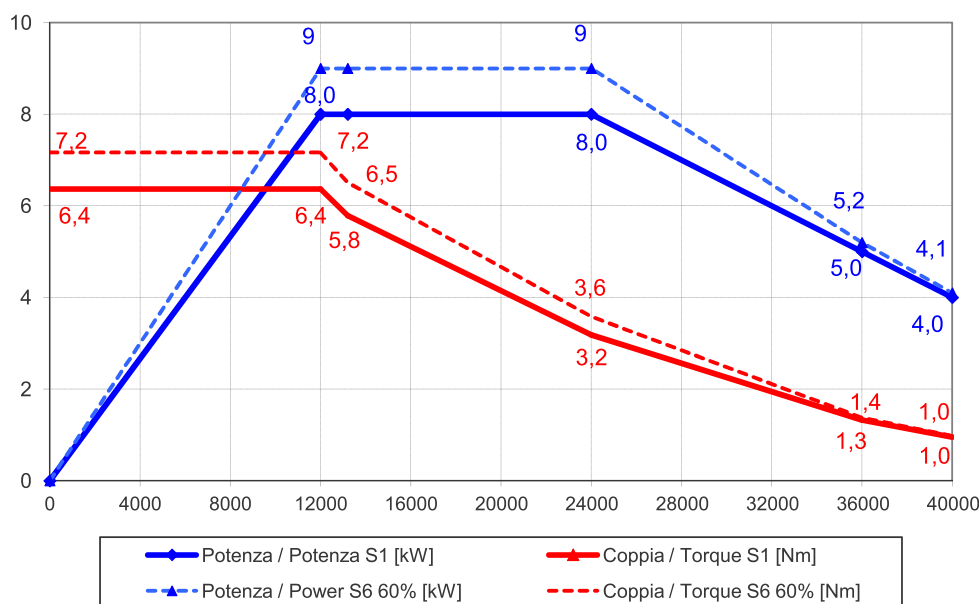
Elettromandrino/electrospindle  
**ELETM. QD-2 8/12 40 32E NL CC EN**

Codice/Code:

**QD.250.L04.00**



### Prestazioni - Performances



Specifiche tecniche / Technical specifications	
Potenza max. (serv. S1) / Max. Power.(S1 duty)	8 kW @ 12000 Rpm
Coppia max. (serv. S1) / Max. Torque (S1 duty)	6,4 Nm
Corrente (serv. S1) / Current (S1 duty)	24 A
Potenza max. (serv. S6 60%) / Max. Power.(S6 60% duty)	9 kW @ 12000 Rpm
Coppia max. (serv. S6 60%) / Max. Torque (S6 60% duty)	7,2 Nm
Corrente (serv. S6 60%) / Current (S6 60% duty)	26 A
Tensione / Voltage	380 V
Numero poli / Poles	4
Velocità rotazione max / Max Speed	40 000 Rpm
Rotazione / Rotation	CW - CCW
Azionamento / Supply	con inverter / by inverter
Attacco utensile / Tool interface	HSK 32E
Cuscinetti / Ball bearings	Ceramici obliqui ad alta velocità alta precisione / Ceramic high speed high precision angular contact ball bearings Ant./Front: terna / three bearings Post./Rear: coppia / pair
Raffreddamento / cooling	Liquido / Liquid
Sensoristica / Sensors	S1 Afferraggio utensile / Tool locked S2 Pinza aperta / Tool released S3 Rotazione albero / Spindle rotation S5 ritorno pistone (opz.) / piston back (opt.)
Encoder	TTL 5V 1024 impul./giro+impul. rifer. TTL 5V 1024 pulse/rev.+refer. mark
Connessioni pneumatiche / Air inlets	Sblocco uten./Release. tool: E6 3,5-4 bar Pressurizz./Pressurization.: E4 3,5-4 bar Soffio cono/Taper clean.: E6 6-6,5 bar
Peso / Weight	20 kg

